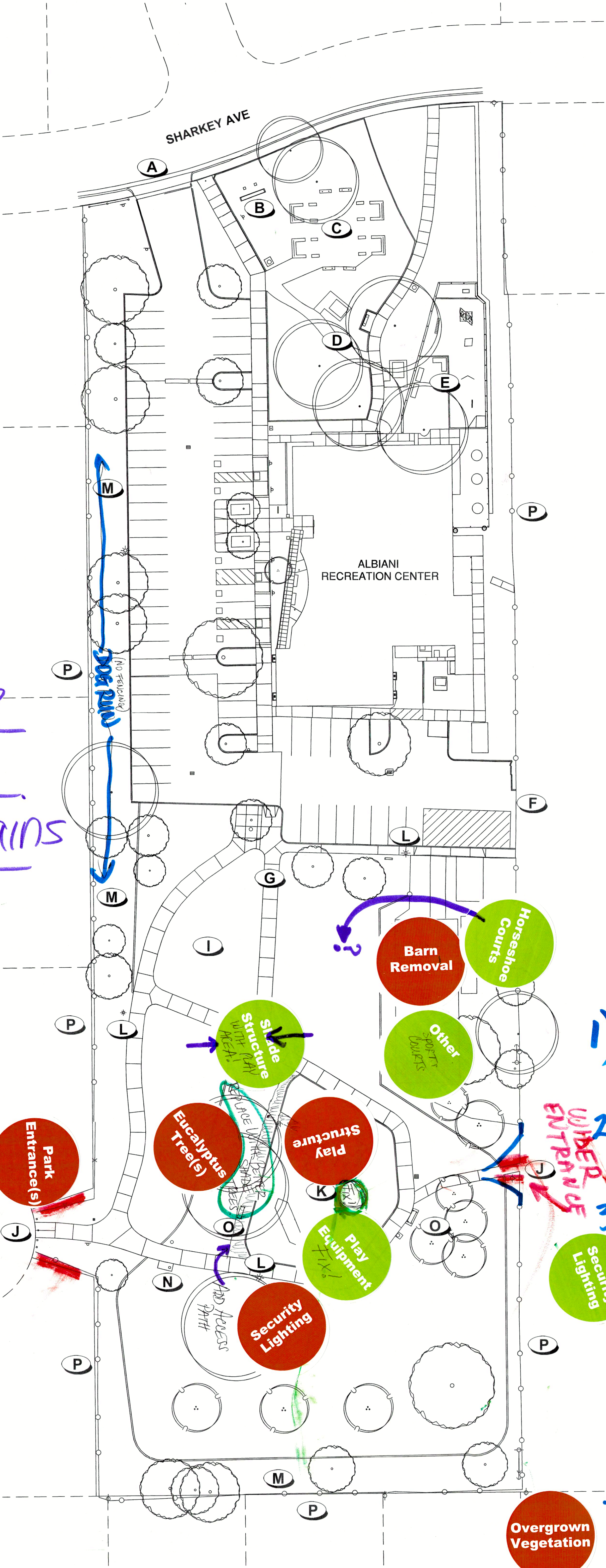


Barbeque  
**No!**



# PLAN LEGEND

- (A) NORTH ENTRANCE
- (B) PARK SIGN
- (C) HORSESHOE COURTS
- (D) PICNIC AREA
- (E) ALBIANI PLAY YARD
- (F) EAST ENTRANCE
- (G) CONCRETE PATHWAY
- (H) BARN AND STORAGE AREA
- (I) GRASS MOUND
- (J) PEDESTRIAN ENTRANCE
- (K) 2-12 YEAR OLD PLAYGROUND
- (L) PARK LIGHTS
- (M) PLANTING AREA
- (N) DRINKING FOUNTAIN
- (O) PARK BENCH
- (P) PARK FENCE

★ More water fountains

- 1) **PLAY STRUCTURES!**  
COVER PART. ACCESS. WALK WAY FOR ENTRANCES!
- 2) **BARN REMOVAL.**  
REPLACE WITH SPORTS "COURTS" — HORSESHOE?
- 3) **SECURITY LIGHTING**
- 4) **WIDEN ENTRANCES ON WEST & EAST**
- 5) **FIGHT IRRIGATION**
- 6) **MORE WATER FOUNTAINS**
- 7) **REMOVE ALL INVASIVE PLANTS! PRIVITS!**

## BEEMAN PARK SITE PLAN







- ~~the~~ Involve schools around park to get involved in park gardening & other activities to maintain clean park

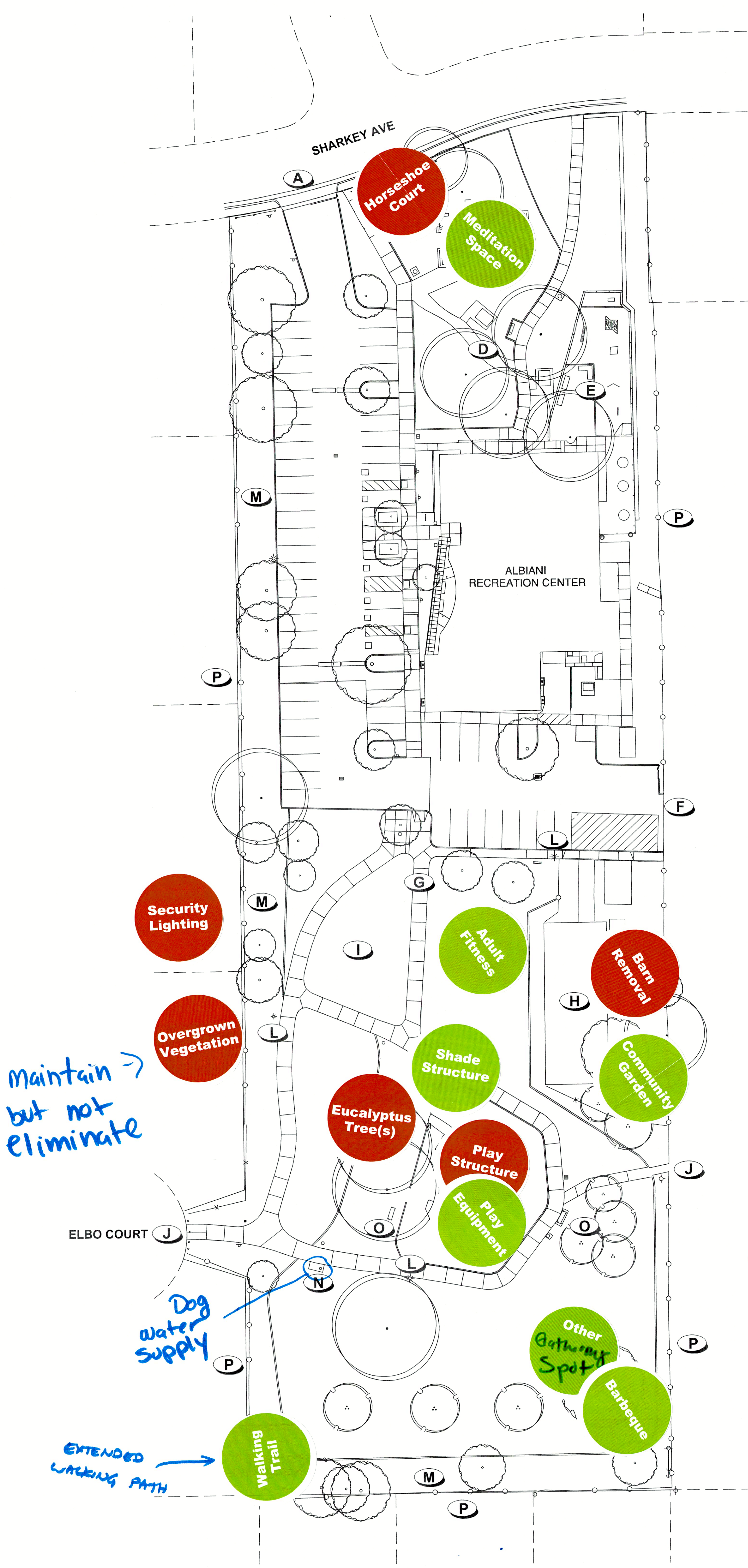
PLAN LEGEND

- A NORTH ENTRANCE
- B PARK SIGN
- C HORSESHOE COURTS
- D PICNIC AREA
- E ALBIANI PLAY YARD
- F EAST ENTRANCE
- G CONCRETE PATHWAY
- H BARN AND STORAGE AREA
- I GRASS MOUND
- J PEDESTRIAN ENTRANCE
- K 2-12 YEAR OLD PLAYGROUND
- L PARK LIGHTS
- M PLANTING AREA
- N DRINKING FOUNTAIN
- O PARK BENCH
- P PARK FENCE

- shade on West side for shade over all park in the evening

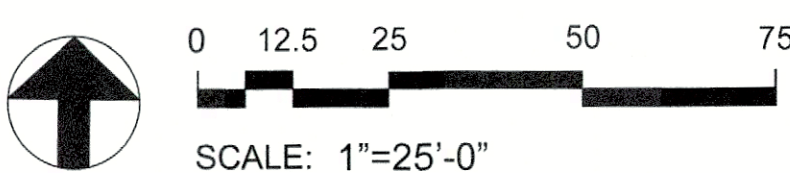
Shade  
- Play structure  
- separation Ages area  
- Cork Flooring/Padding  
- "No Bark/sand"  
- climbing/webbing/hills  
- Spinning chairs  
- Zipline!!!  
- Spinning chairs  
- Swings/Play for disability individuals

Maintain -> but not eliminate



BEEMAN PARK SITE PLAN

Cosumnes Community Services District - Facility and Development Department - January 2024









## PLAN LEGEND

- (A) NORTH ENTRANCE**
- (B) PARK SIGN**
- (C) HORSESHOE COURTS**
- (D) PICNIC AREA**
- (E) ALBIANI PLAY YARD**
- (F) EAST ENTRANCE**
- (G) CONCRETE PATHWAY**  
*Light sand/soil paths*
- (H) BARN AND STORAGE AREA**  
*Deep 6 and Replace with play areas*
- (I) GRASS MOUND**
- (J) PEDESTRIAN ENTRANCE**
- (K) 2-12 YEAR OLD PLAYGROUND**
- (L) PARK LIGHTS**
- (M) PLANTING AREA**
- (N) DRINKING FOUNTAIN**  
*Needs replacing w/ dog access current fountain leaks*
- (O) PARK BENCH**  
*More than 2*
- (P) PARK FENCE**  
*Remove vines by school dist  
Leave rest as is*

## Phase I

# BEEMAN PARK SITE PLAN

Cosumnes Community Services District - Facility and Development Department - January 2024



