



Meeting #1 • 05/02/2023

# Unity Park Community Outreach

COSUMNES COMMUNITY SERVICES DISTRICT



## Our Mission

The Cosumnes CSD is dedicated to enhancing the quality of life of the residents, businesses, visitors, and employees within our diverse community by protecting lives, property, and the environment through superior fire suppression, emergency medical services, fire prevention, and special operations response; and by providing parks and recreation services through well-maintained parks and recreational opportunities for health, wellness, and social interactions.

## Our Vision

Be an innovative, inclusive, and intentional, regional leader committed to providing exceptional services that exceed expectations and enhance the quality of life of those we serve.



# Our Values

## **Safety & Mitigating Risk**

We protect District employees, as well as mitigate risk and exposure of the District and public.

## **Financial Responsibility**

We are an accountable, transparent, and stable Agency as we provide quality services through progressive innovations.

## **High-Quality Workforce**

We develop and train a high-quality workforce with emphasis on professionalism, diversity, equity and inclusion, succession planning, competency, and organizational growth.

## **Service to the Community**

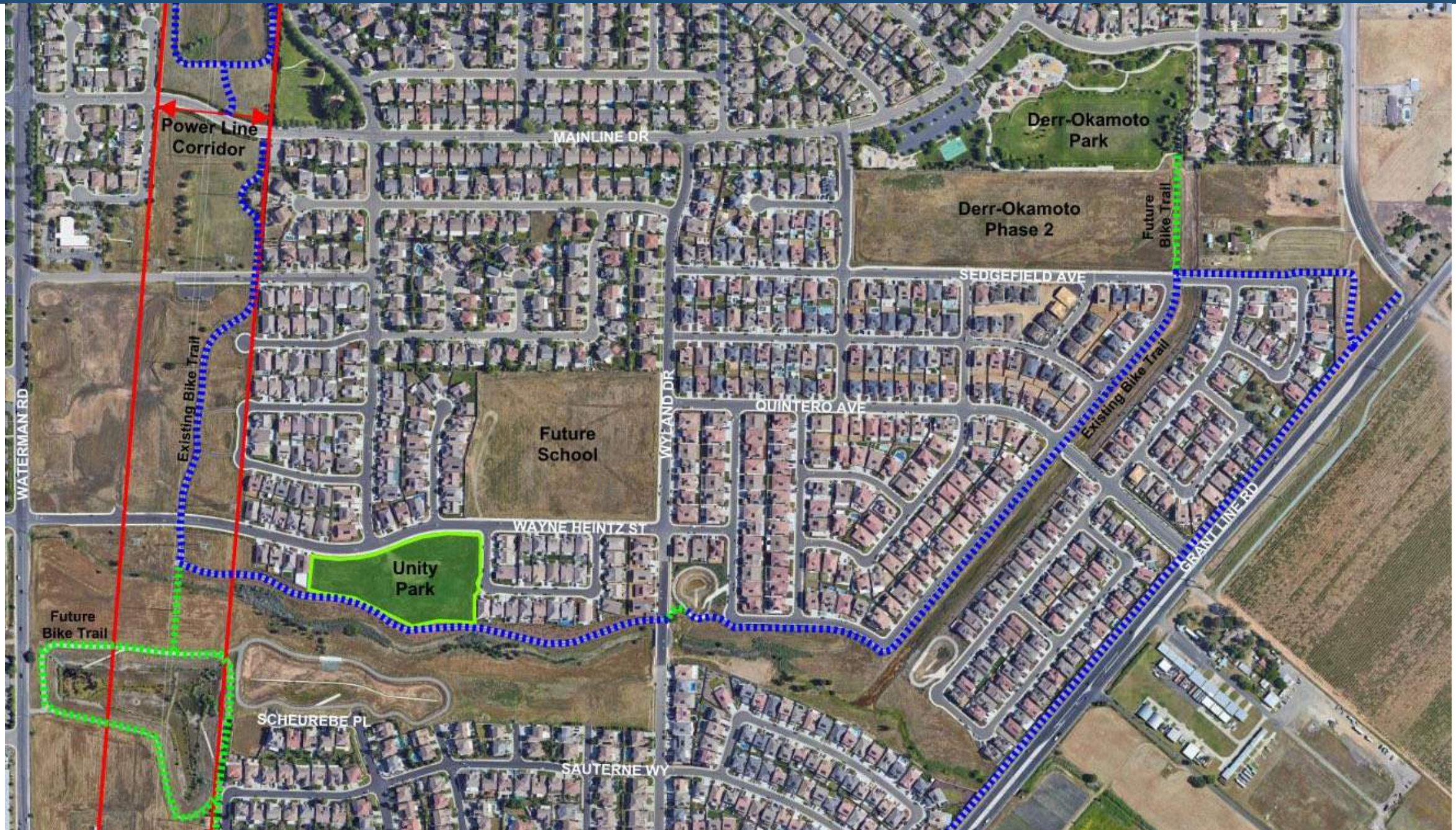
We deliver the highest levels of service to the residents, visitors, and businesses within the District.

## **Diversity, Equity & Access**

We ensure diversity, equity, and inclusion in all aspects of district work.



Unity Park Site: 4 acres



COSUMNES COMMUNITY SERVICES DISTRICT



# Park Planning Process

## Currently Step Two: Public Involvement

- Two Public Workshops
- Website Interaction
- Ongoing Public Feedback
- Master Plan Development



# Funding



## Capital Improvement Plan (CIP)

The Unity Park budget is outlined in the latest CIP document as follows:

- Park Construction Budget: \$2,080,000
- Design Cost: \$250,000
- Construction Management: \$150,000
- Permit Fees: \$50,000



# Park Design Principles



**Unity Park** is defined as a neighborhood park (3 to 9 acres in size)

Neighborhood parks typically include the following amenities:

- Playgrounds for 2-5 and 5-12 age groups
- Non-programmed grass fields or open space
- Sport court(s) (one or two small)
- Picnic area with shade structure
- Looped trail
- Site furnishings (benches, tables, etc.)
- Security lighting
- 85% active space and 15% passive space



# Group Concept Designs

COSUMNES COMMUNITY SERVICES DISTRICT



## Unity Park Community Outreach

# Red Group



- Desire a park that both adults and teenagers can use (important)
- Big grass area for sports
- Quiet space near neighboring homes
- Sport courts, basketball or pickle ball for older kids in neighborhood
- Picnic area with shade structure in the middle
- Focus on large playground for ages 5-12
- Water play for very hot days
- Meditation garden, quiet space nearest to homes
- Prefer no public restroom at park



## Unity Park Community Outreach

# Blue Group



- Keep park open because of existing trail
- Non-programmed grass field or open space
- No sport courts
- Picnic area with shade structure and water play set in center of park so small children are not near street and parked cars
- Looped trail with fitness placed in various locations
- Both ends of park near homes should have meditation space
- Public art at entrance of the park
- Small dog park for animals so they are not off-leash in the park



# Unity Park Community Outreach

## Yellow Group



- Water play at entrance of park
- Large play area near water play
- Pickle ball and basketball courts
- Restrooms important for small children and pickle ball players
- Picnic area with shade structure (Keep picnic area small so that it does not become a destination picnic venue.)
- Adult fitness accessible from the trail
- Both ends of park near homes should be open space and quiet meditation areas
- Edible and butterfly gardens with public art



# Unity Park Community Outreach

## Green Group



- Local neighbors should be first consideration for design of the park
- Non-programmed grass fields or open space near homes
- Picnic area with shade structure
- Both ends of park near homes should have quiet meditation space and gardens
- Small dog park
- Sport courts, pickle ball for older children
- Lots of trees



## Unity Park Community Outreach

# Black Group



- Public art at entrance of the park on corner
- Native plant garden at end of park near homes
- Water play area for hot days
- Extra large play area to accommodate all ages of children
- Picnic area with shade structure
- Horseshoe pits and bocce ball for all ages
- Looped trail with lots of trees
- Restroom near street so it is always visible
- Pickle ball

# Unity Park Community Outreach

## Maroon Group



- More open space to keep the park quiet
- Tennis and pickle ball sport courts
- Small and large picnic areas with shade structures
- Both ends of park near homes should have quiet meditation space
- Public art and native garden
- Restroom near street, close to utilities



# Unity Park Community Outreach

## Purple Group

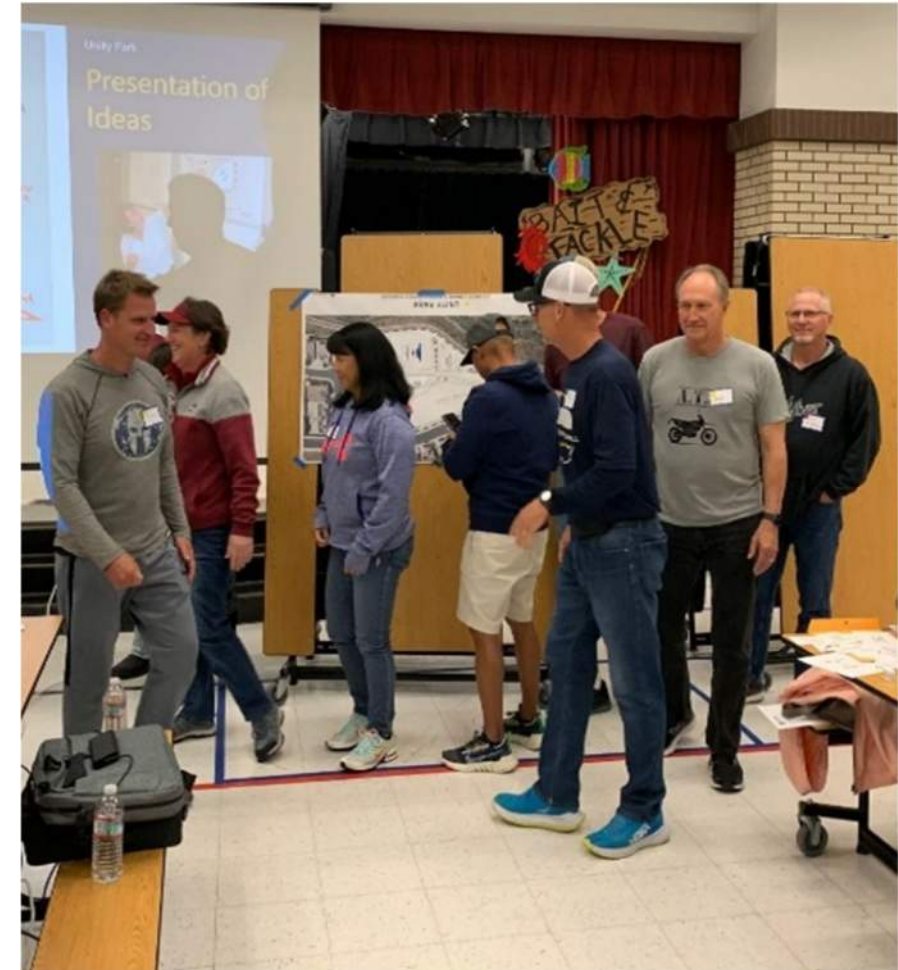


- Desire small dog park due to number of dogs currently on trails
- Two different play areas to accommodate all age groups
- Most homes multigenerational, add pickle ball and bocce ball amenities
- Small skate element for young children, not able to compete at Derr-Okamoto.
- Shade structures (important)
- Community garden with a labyrinth
- Combine public art with water play element
- Meditation and garden space near homes
- Public restroom (very important)



# Unity Park Community Outreach

## Photos from Event







Unity Park Community Outreach

**Thank you for  
participating!**